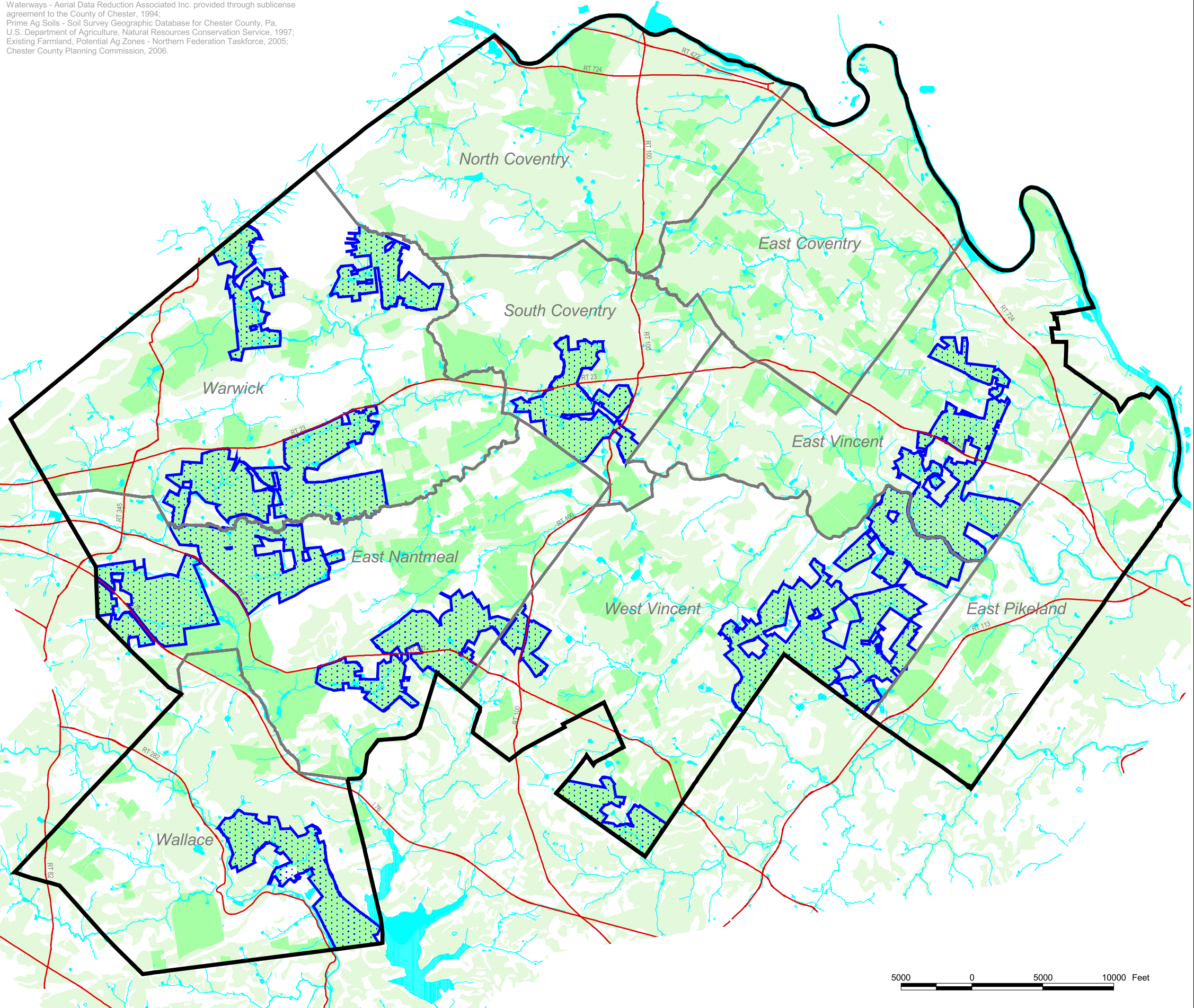


Data Source: Municipal Borders, Roadways - Chester County Bureau of Land Records, 2003;
 Waterways - Aerial Data Reduction Associated Inc. provided through sublicense
 agreement to the County of Chester, 1994;
 Prime Ag Soils - Soil Survey Geographic Database for Chester County, Pa,
 U.S. Department of Agriculture, Natural Resources Conservation Service, 1997;
 Existing Farmland, Potential Ag Zones - Northern Federation Taskforce, 2005;
 Chester County Planning Commission, 2006.



Map 6-1: Agricultural Plan

- RESOURCES:**
 Prime Agricultural Soils
- DESIGNATIONS:**
 Potential Agricultural Zones
 Existing Farmland
- BASE FEATURES:**
 Study Area Boundary
 Municipal Borders
 Waterways (Rivers, Streams, Ponds)
 Major Roads

Adopted October 2006

This map was digitally compiled for internal maintenance and developmental use by the County of Chester, Pennsylvania to provide an index to parcels and for other reference purposes. Parcel lines do not represent actual field surveys of premises. County of Chester, Pennsylvania makes no claims as to the completeness, accuracy or content of any data contained hereon, and makes no representation of any kind, including, but not limited to, the warranties of merchantability or fitness for a particular use, nor are any such warranties to be implied or inferred, with respect to the information or data furnished herein.

No part of this document may be reproduced, stored in a retrieval system or transmitted in any form or by any means, electronic, mechanical, photocopying, recording or otherwise, except as expressly permitted by the County of Chester, Pennsylvania.

Regional Resource Protection Plan

Federation of Northern Chester County Communities



Map 6-1